



Perforación
Perforation
2,81 %

Acabados | Finishes

Melamina | Melamine

Espesor | Thickness: 16 mm.

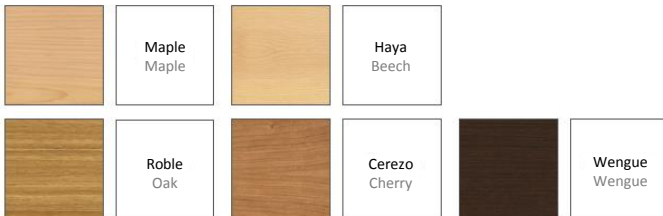
Peso | Weight: 14 Kg/m² aprox.



Madera natural | Natural wood

Espesor | Thickness: 16 mm.

Peso | Weight: 14 Kg/m² aprox.



Lacado RAL/NSC | RAL/NSC Lacquer

Espesor | Thickness: 16 mm.

Peso | Weight: 14 Kg/m² aprox.

HPL | Laminated HPL

Espesor | Thickness: 16 mm.

Peso | Weight: Variable/Variable

Soportes | Support

MDF estándar | Standard MDF

MDF hidrófugo | Water-resistant MDF

MDF ignífugo | Fire-retardant MDF

* Posibilidad de otros soportes según proyecto.

* Possibility of other supports depending on project.

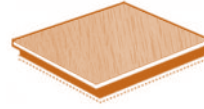
Perforación | Perforation

Canal | Channel: 2,8 mm.

Distancia taladros | Distance of drilled: 16 mm

Distancia canales | Distance of channels: 64 mm

Medidas estándar | Standard measurements



1200x300 mm. | 2400x300 mm.

* Disponible en otras medidas según proyecto.

* Available in other measurements depending on project.

Absorción acústica | Acoustic absorption

Coefficiente medio de absorción | Average absorption coefficient

Frecuencia baja | Low frequency $\alpha = 0,64$

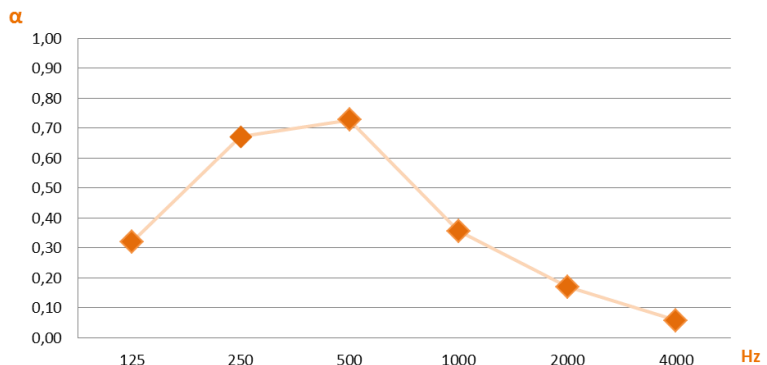
Frecuencia media | Medium frequency $\alpha = 0,53$

Frecuencia alta | High frequency $\alpha = 0,24$

0,471

NRC 0,55

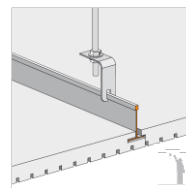
(Noise Reduction Coefficient)



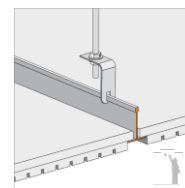
* Datos estimados según norma UNE ISO 354

* Data estimated according to standard UNE ISO 354

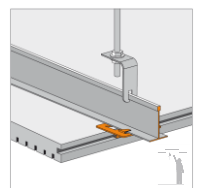
Mecanizados perimetrales | Perimeter machining



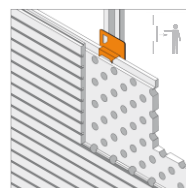
Perfil Oculito T-15
Concealed form T-15



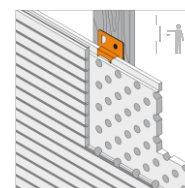
Perfil Semivisto T-15 o T-24
Semi-exposed form T-15 or T-24



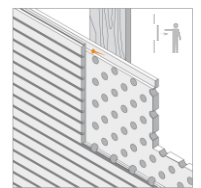
Perfil oculto T-24 + grapa de fijación
Concealed Form T-24 + cramp iron



Sistema Omega + Grapa
Omega system + cramp iron



Rastrel de madera + Grapa
Wooden spacer + cramp iron



Rastrel de madera Sin Grapa
Wooden spacer without cramp iron