

Perforación  
Perforation

0 %

## Acabados | Finishes

### Melamina | Melamine

Espesor | Thickness: 16 mm.

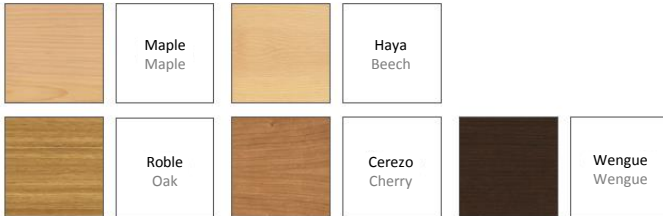
Peso | Weight: 14 Kg/m<sup>2</sup> aprox.



### Madera natural | Natural wood

Espesor | Thickness: 16 mm.

Peso | Weight: 14 Kg/m<sup>2</sup> aprox.



### Lacado RAL/NSC | RAL/NSC Lacquer

Espesor | Thickness: 16 mm.

Peso | Weight: 14 Kg/m<sup>2</sup> aprox.

### HPL | Laminated HPL

Espesor | Thickness: 16 mm.

Peso | Weight: Variable/Variable

## Soportes | Support

### MDF estándar | Standard MDF

### MDF hidrófugo | Water-resistant MDF

### MDF ignífugo | Fire-retardant MDF

\* Posibilidad de otros soportes según proyecto.

\* Possibility of other supports depending on project.

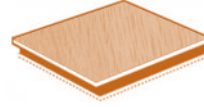
## Perforación | Perforation

Canal | Channel: 2,8 mm.

Distancia taladros | Distance of drilled: -

Distancia canales | Distance of channels: 32 mm

## Medidas estándar | Standard measurements



1200x300 mm. | 2400x300 mm.

\* Disponible en otras medidas según proyecto.

\* Available in other measurements depending on project.

## Absorción acústica | Acoustic absorption

### Coefficiente medio de absorción | Average absorption coefficient

Frecuencia baja | Low frequency  $\alpha = 0,11$

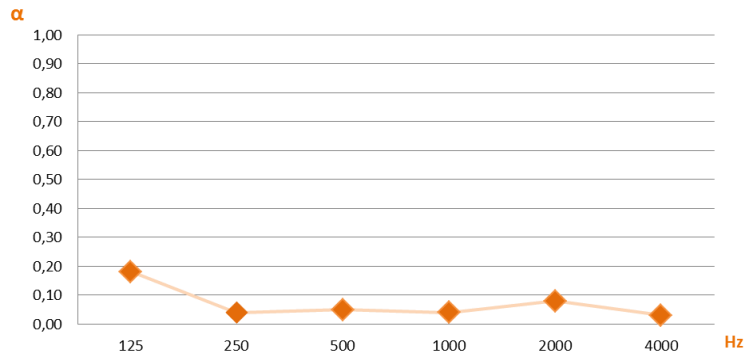
Frecuencia media | Medium frequency  $\alpha = 0,05$

Frecuencia alta | High frequency  $\alpha = 0,06$

0,070

**NRC 0,05**

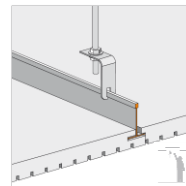
(Noise Reduction Coefficient)



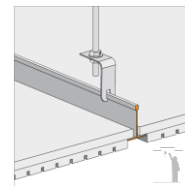
\* Datos estimados según norma UNE ISO 354

\* Data estimated according to standard UNE ISO 354

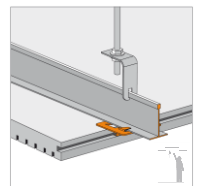
## Mecanismos perimetrales | Perimeter machining



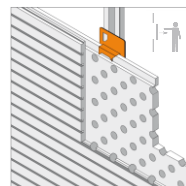
Perfil Oculito T-15  
Concealed form T-15



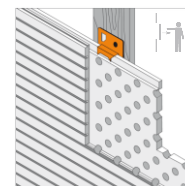
Perfil Semivisto T-15 o T-24  
Semi-exposed form T-15 or T-24



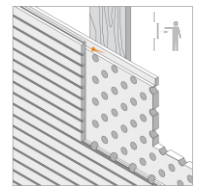
Perfil oculto T-24 + grapa de fijación  
Concealed Form T-24 + cramp iron



Sistema Omega + Grapa  
Omega system + cramp iron



Rastrel de madera + Grapa  
Wooden spacer + cramp iron



Rastrel de madera Sin Grapa  
Wooden spacer without cramp iron