

Perforación  
Perforation  
**17,50 %**

## Acabados | Finishes

### Melamina | Melamine

Espesor | Thickness: 16 mm.  
Peso | Weight: 10 Kg/m<sup>2</sup> aprox.



### Madera natural | Natural wood

Espesor | Thickness: 16 mm.  
Peso | Weight: 11 Kg/m<sup>2</sup> aprox.



### Lacado RAL/NSC | RAL/NSC Lacquer

Espesor | Thickness: 16 mm.  
Peso | Weight: 10 Kg/m<sup>2</sup> aprox.

### HPL | RAL/NSC Lacquer

Espesor | Thickness: 16 mm.  
Peso | Weight: Variable/Variable

## Soportes | Support

### MDF estándar | Standard MDF

### MDF hidrófugo | Water-resistant MDF

### MDF ignífugo | Fire-retardant MDF

\* Posibilidad de otros soportes según proyecto.  
\* Possibility of other supports depending on project.

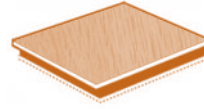
## Perforación | Perforation

Canal | Channel: 4,2 mm.

Distancia taladros | Distance of drilled: 16 mm

Distancia canales | Distance of channels: 16 mm

## Medidas estándar | Standard measurements



1200x300 mm. | 2400x300 mm.

\* Disponible en otras medidas según proyecto.  
\* Available in other measurements depending on project.

## Absorción acústica | Acoustic absorption

### Coefficiente medio de absorción | Average absorption coefficient

Frecuencia baja | Low frequency  $\alpha = 0,56$

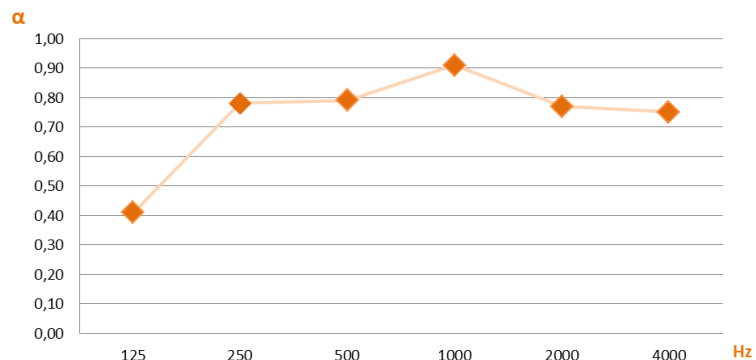
Frecuencia media | Medium frequency  $\alpha = 0,90$

Frecuencia alta | High frequency  $\alpha = 0,62$

# 0,698

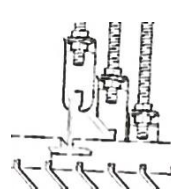
## NRC 0,85

(Noise Reduction Coefficient)

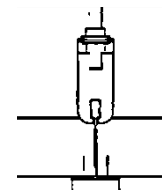


\* Datos estimados según norma UNE ISO 354  
\* Data estimated according to standard UNE ISO 354

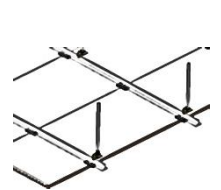
## Mecanizados perimetrales | Perimeter machining



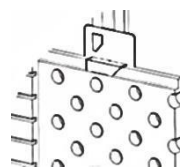
Perfil Oculto T-15  
Concealed form T-15



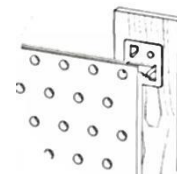
Perfil Semivisto T-15 o T-24  
Semi-exposed form T-15 or T-24



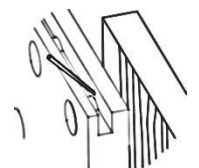
Perfil oculto T-24 + grapa de fijación  
Concealed Form T-24 + cramp iron



Sistema Omega + Grapa  
Omega system + cramp iron



Rastrel de madera + Grapa  
Wooden spacer + cramp iron



Rastrel de madera Sin Grapa  
Wooden spacer without cramp iron